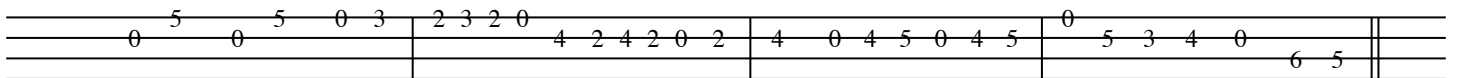
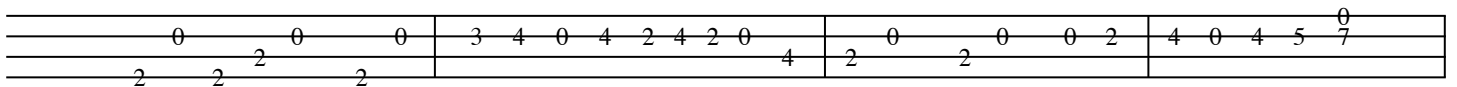
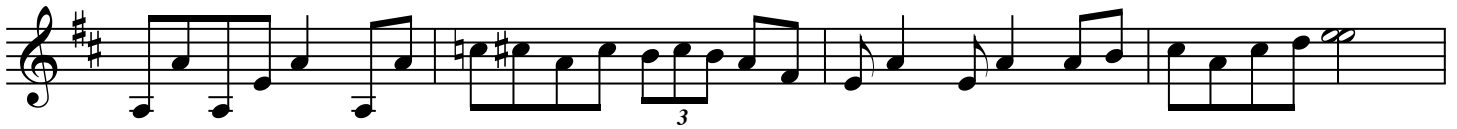
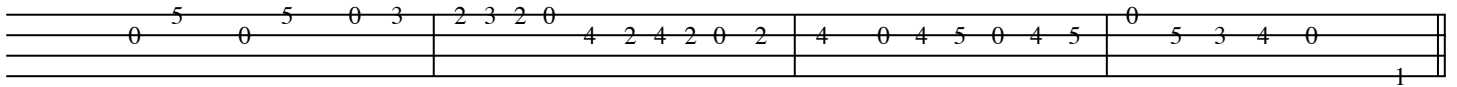
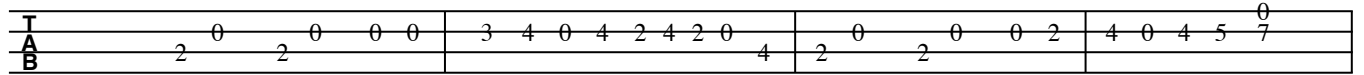


Scotch and Swing

Mike Marshall



Scotch and Swing 1

Musical staff with treble clef, key signature of three sharps (F#, C#, G#), and a 4/4 time signature. The melody consists of eighth and quarter notes with some rests.

Bass staff with a 4/4 time signature. Fingering numbers (0-4) are written below the staff.

Musical staff with treble clef, key signature of three sharps, and a 6/8 time signature. It includes first and second endings.

Bass staff with a 6/8 time signature. Fingering numbers (0-6) are written below the staff.

Musical staff with treble clef, key signature of three sharps, and a 6/8 time signature. The melody is primarily eighth notes.

Bass staff with a 6/8 time signature. Fingering numbers (0-5) are written below the staff.

Musical staff with treble clef, key signature of three sharps, and a 6/8 time signature. The melody is primarily eighth notes.

Bass staff with a 6/8 time signature. Fingering numbers (0-5) are written below the staff.

Musical staff with treble clef, key signature of three sharps, and a 6/8 time signature. It features a double bar line and repeat sign.

Bass staff with a 6/8 time signature. Fingering numbers (0-7) are written below the staff.